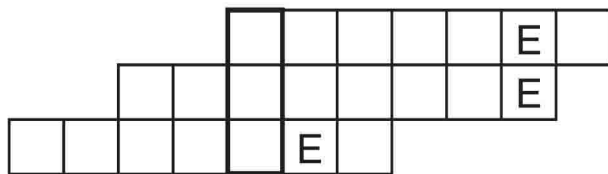
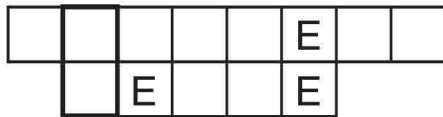
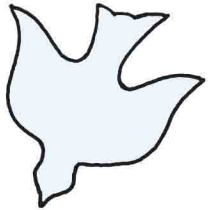
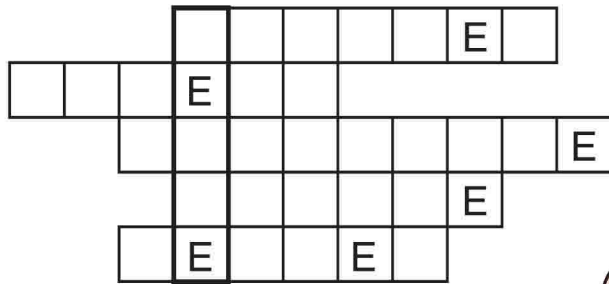


When we pray, our minds  
and hearts are guarded  
by God's presence.

Fit the names of protective things into the boxes.  
Use the words in the vertical boxes to complete the verse.

BARRICADE	FORTRESS	BLOCKADE	SHIELD
GOGGLES	CASTLE	HELMET	CITADEL
	PARAPET	FENCE	



"And the \_\_\_\_\_,  
which transcends all understanding, will guard your hearts  
and your minds in Christ Jesus."

Ages 7+

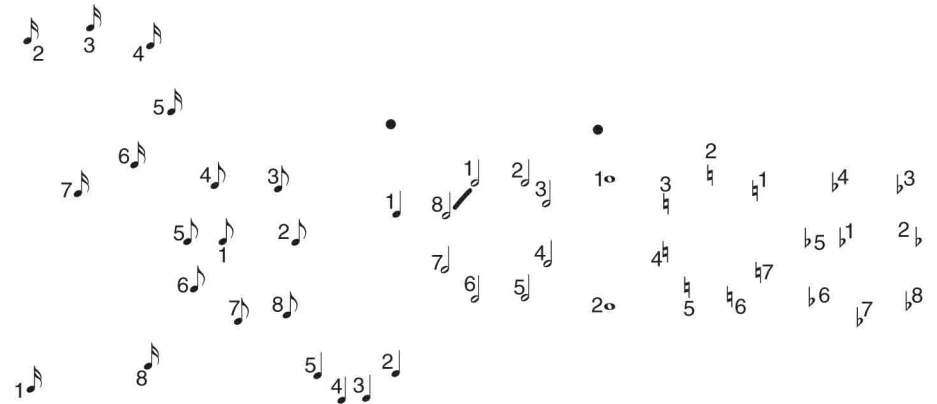
September 7, 2025 • Philippians 4:4-7

## Rejoice in the Lord Always



Paul emphasized one thing  
by repeating it twice.  
What was it?

Join all the numbered 1/16 notes (♪) in order,  
then all the 1/8 (♪), the 1/4 notes (♪), the 1/2 notes (♪),  
the whole notes (♩), the sharps (♯), and the flats (♭).



Zion Reformed United Church of Christ  
201 N Potomac Street  
Hagerstown, MD 21740  
[www.ZionReformed.church](http://www.ZionReformed.church)

Enter your **SECRET CODE** to unlock games @  
[games.childrensbulletins.com](http://games.childrensbulletins.com)

**SECRET CODE!**  
**KXDVM2**

When others meet a Christian person,  
what should they notice?

Unscramble the words which might describe a Christian.  
Then use the boxed letters to complete Philippians 4:5.

OICARGSU

FRETLEPSCU

BOLEN

SURUTOOCE

LIMD

CENI

NIDK

PLULHEF

NASALEPT

TEARNOSECID



"Let your

be evident to all."

Paul said that Christians should not  
be constantly worrying.

Fill each blank with a word from the list that rhymes  
with the word beneath the blank.

in	by	but	your	anxious	anything
be	not	God	about	present	requests
do	and	with	prayer	petition	

" \_\_\_\_\_ SHOE \_\_\_\_\_ BOUGHT \_\_\_\_\_ SEA \_\_\_\_\_

\_\_\_\_\_ SPACIOUS \_\_\_\_\_ SHOUT \_\_\_\_\_

\_\_\_\_\_ EVENING \_\_\_\_\_, \_\_\_\_\_ CUT \_\_\_\_\_ CHIN \_\_\_\_\_

everything, \_\_\_\_\_ HIGH \_\_\_\_\_ AIR \_\_\_\_\_

\_\_\_\_\_ GRAND \_\_\_\_\_ RENDITION \_\_\_\_\_,

\_\_\_\_\_ MYTH \_\_\_\_\_ thanksgiving,

\_\_\_\_\_ INVENT \_\_\_\_\_ FOUR \_\_\_\_\_

\_\_\_\_\_ DIGESTS \_\_\_\_\_ to \_\_\_\_\_ BROAD \_\_\_\_\_."

